

DESCRIPTION: M12 // MALE // 3P // PANEL RIGHT ANGLE // PCB

**SPECIFICATIONS:**

**MATERIALS:**  
 HOUSING: PBT, UL94 V-0, BLACK  
 CONTACTS: GOLD PLATED BRASS (SEE P/N KEY BELOW)  
 NUT: NICKEL PLATED BRASS  
 SHELL: NICKEL PLATED BRASS  
 ORING: EPDM, BLACK

**ELECTRICAL:**  
 RATED CURRENT: 4A  
 RATED VOLTAGE: 250V  
 INSULATION RESISTANCE: 100 MOhms MIN.  
 CONTACT RESISTANCE: 10 mOhms MAX.

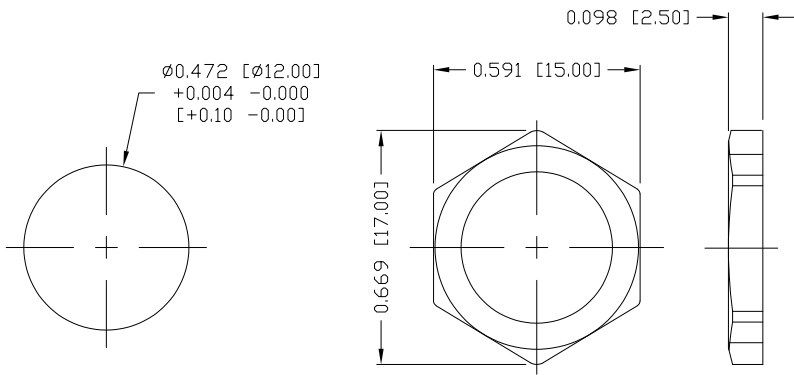
**ENVIRONMENT:**  
 OPERATING TEMPERATURE: -40°C TO +85°C  
 WATER PROOF: IP67

**NORCOMP MATING PART NUMBERS:**

858-L03-203RKT4\*  
 858-R03-203RSS4\*  
 858-R03-203RSU4\*  
 \*Also all material and contact plating variants

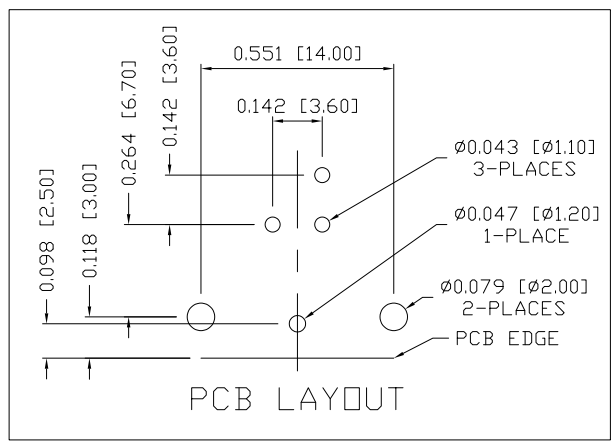
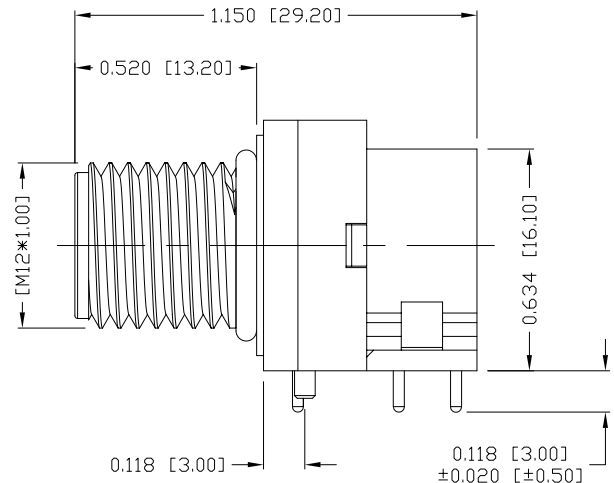
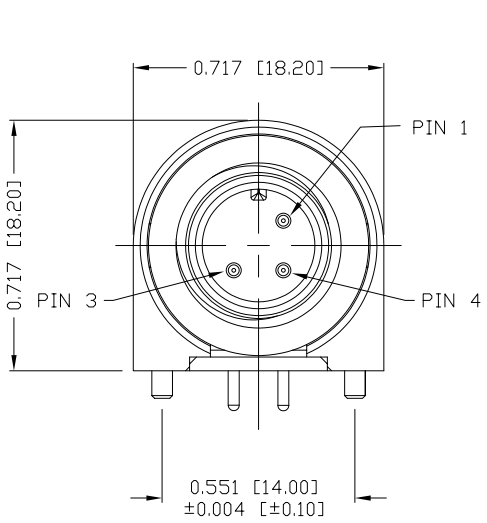
**861-R03-113R00Y**

3 = BRASS/NICKEL SHELL & NUT  
 S = STAINLESS STEEL SHELL & NUT  
 1 = GOLD FLASH  
 4 = 10µ" GOLD



PANEL CUTOUT

NUT



PCB LAYOUT

**RoHS COMPLIANT**



THESE DRAWINGS AND SPECIFICATIONS ARE THE PROPERTY OF NorComp AND SHALL NOT BE REPRODUCED, COPIED OR USED AS THE BASIS FOR THE MANUFACTURE OR SALE OF APPARATUS WITHOUT WRITTEN PERMISSION.

DRAWN: M. SIGMON  
 DATE: 03/07/2016

UNITS = inch [mm]

**DO NOT SCALE FROM DRAWING**

**NorComp**

SCALE: NTS	SHEET 1	OF 1	REV 3
DWG NO.			861-R03-113R00Y