

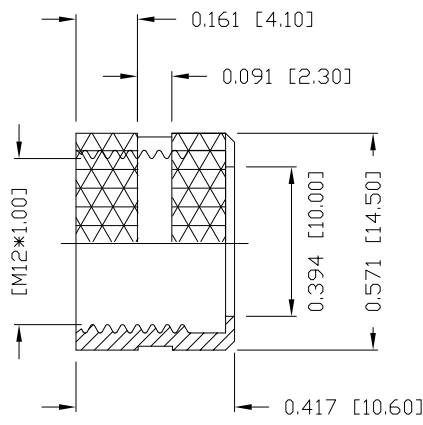
SPECIFICATIONS:

MATERIAL:
 HOUSING: PBT UL94V-0, BLACK
 CONTACT: GOLD PLATED BRASS (SEE P/N KEY BELOW)
NUT: NICKEL PLATED BRASS
SHELL: NICKEL PLATED BRASS
O-RING: EPDM, BLACK

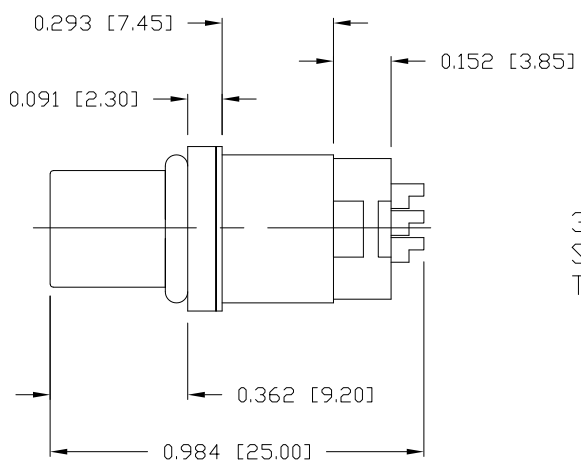
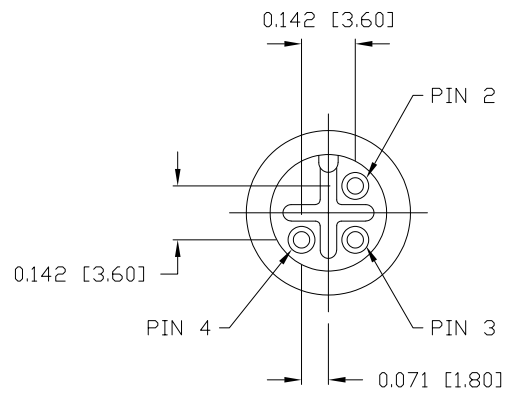
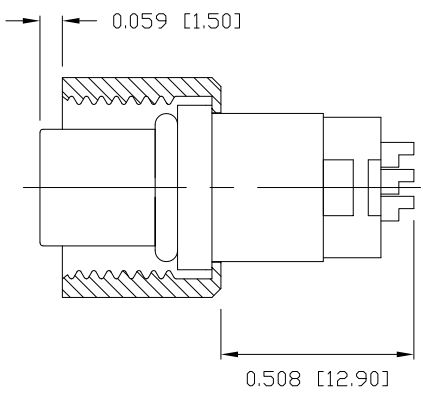
ELECTRICAL:
 RATED CURRENT: 4A
 RATED VOLTAGE: 250V
 INSULATION RESISTANCE: 100 MOhms MIN.
 CONTACT RESISTANCE: 10 mOhms MAX.

ENVIRONMENT
 OPERATION TEMPERATURE: -40°C TO +85°C
 WATER PROOF: IP67

MAX WIRE AWG: 22



NUT



NORCOMP MATING PART NUMBERS:

- 858-003-103RLU4*
 - 859-003-103R004*
 - 860-L03-113R004*
 - 861-003-113R004*
- *Also all material and contact plating variants

858-003-203RLSY

3 = BRASS/NICKEL (B/N) SHELL & NUT
 S = STAINLESS STEEL (SS) SHELL & NUT
 T = B/N SHELL / SS NUT

1 = GOLD FLASH
 4 = 10µ" GOLD

RoHS COMPLIANT

UNITS = inch [mm] DO NOT SCALE FROM DRAWING



THESE DRAWINGS AND SPECIFICATIONS ARE THE PROPERTY OF NorComp AND SHALL NOT BE REPRODUCED, COPIED OR USED AS THE BASIS FOR THE MANUFACTURE OR SALE OF APPARATUS WITHOUT WRITTEN PERMISSION.

DRAWN: M. SIGMON
 DATE: 03/07/2016

NorComp

SCALE: NTS	SHEET 1	OF 1	REV 5
DWG NO. 858-003-203RLSY			