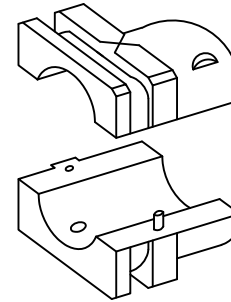
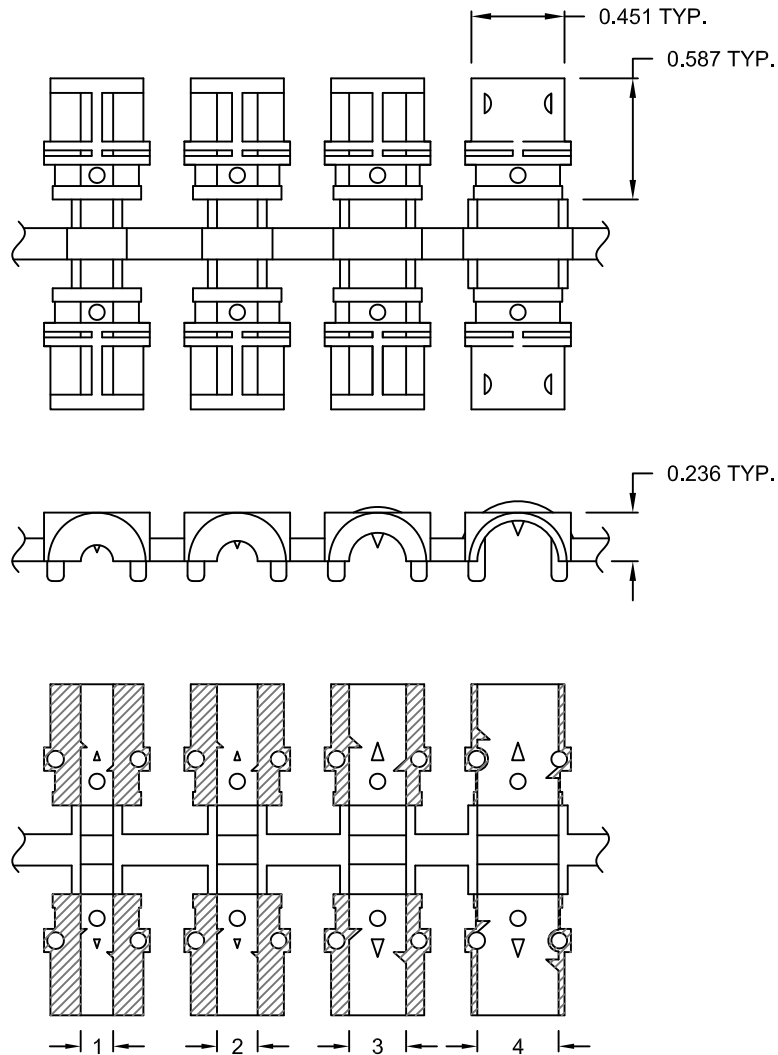


DESCRIPTION: 970 / 971 SERIES - METALIZED PLASTIC COMPRESSION INSERTS

SPECIFICATION:

METALIZED PLASTIC: UL APPROVED ABS PLASTIC, UL94-HB, VH-0800
 METALIZED, SHIELDED
 PLATING - 10µ NICKEL OVER 5µ COPPER



INSERT DIMENSIONS		
NUMBER	in.	mm
1	0.157	[4.0]
2	0.197	[5.0]
3	0.276	[7.0]
4	0.354	[9.0]

NOTE:

INSERTS MAY BE MIXED TO BEST FIT THE CABLE USED

970-RACIR020


BACKSHELL SERIES — 970
 971
 DESCRIPTION — **R**APID
ASSEMBLY
COMPRESSION
INSERT
 RoHS COMPLIANT
 MATERIAL — METALIZED PLASTIC

METALIZED PLASTIC GROMMETS

UNITS = INCHES [MM]

DO NOT SCALE FROM DRAWING

RoHS COMPLIANT

	THESE DRAWINGS AND SPECIFICATIONS ARE THE PROPERTY OF NorComp AND SHALL NOT BE REPRODUCED, COPIED OR USED AS THE BASIS FOR THE MANUFACTURE OF SALE OF APPARATUS WITHOUT WRITTEN PERMISSION.		DRAWN: C. SMITH	DATE: 11-06-07
	NorComp		SCALE: NTS	SHEET 1 OF 1
DWG NO. 970-RACIR020				